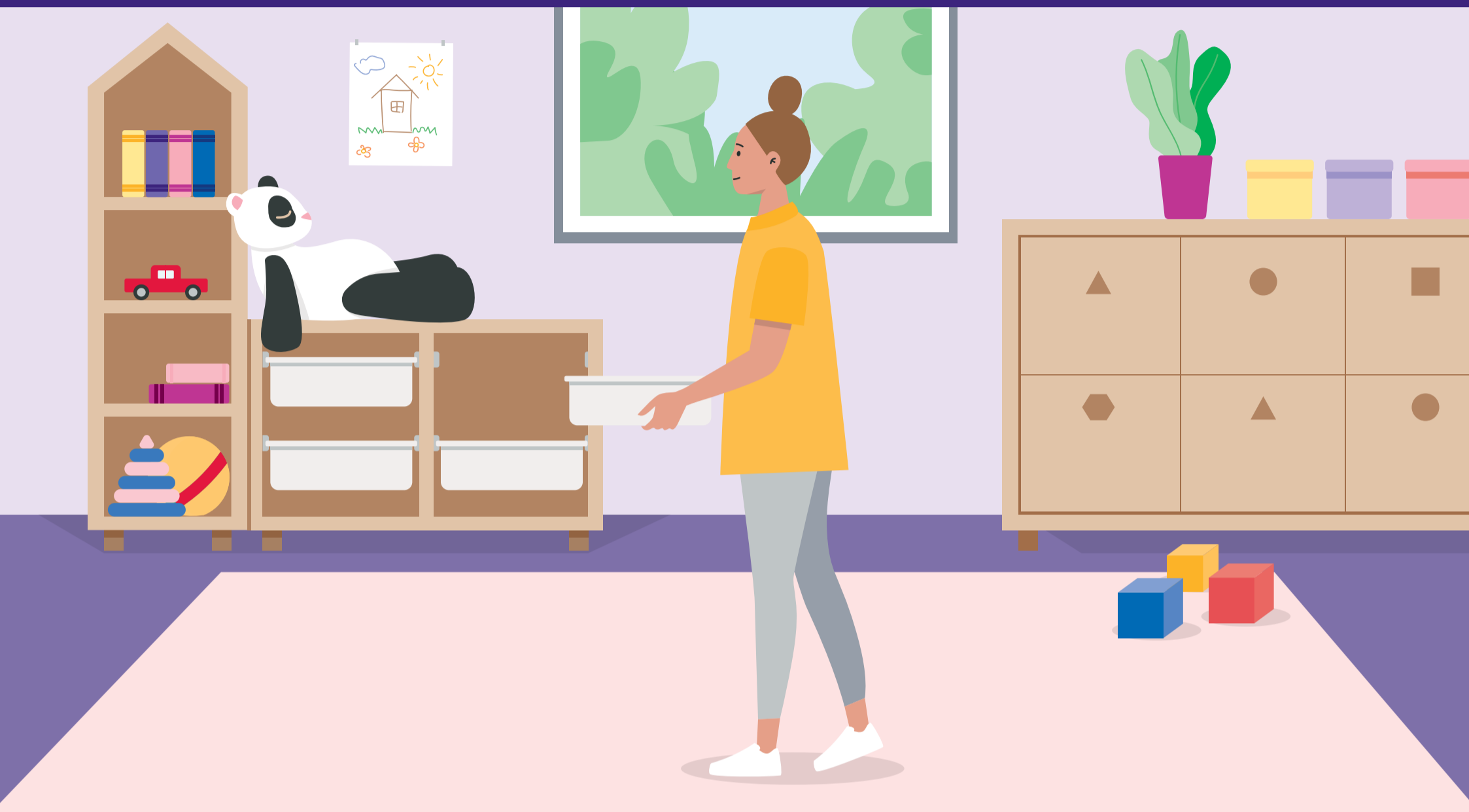


Storage solutions



Suitable storage is a must to safely manage the supplies and equipment needed to care for children.

The risks and solutions to help prevent workplace injuries in early childhood education and care are:

Risks

- Slips, trips and falls.
- Musculoskeletal Disorders (MSDs) like sprains and strains.
- Bending, twisting or reaching at awkward angles when lifting or carrying equipment.

Solutions



- Store as much as you can at a height that minimises the need to bend or reach.
- Use appropriate shelving and trolleys.
- Review your storage system annually.

For more info and solutions visit safework.nsw.gov.au

Q early childhood education and care