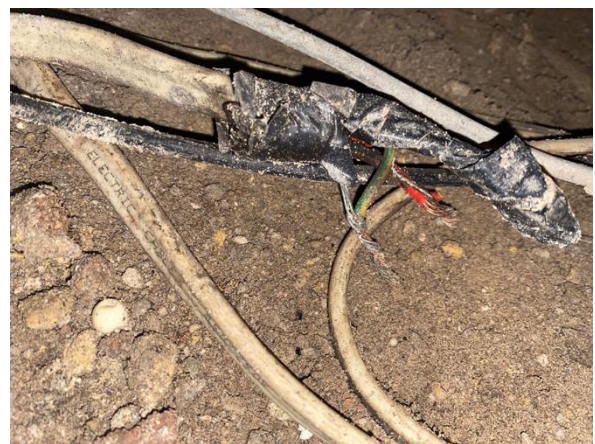


25/05/2022

Electrical Incident

6 April 2022

A 35-year-old electrician was fatally injured when he handled energised wires whilst completing works on an electrical circuit beneath a house.



Incident site underneath the house where exposed electrical cables were located.

Safety information

Electric shock is the second leading cause of death in the construction industry. It is important to ensure electrical work is either conducted or appropriately supervised by a licensed electrician. Further information on licensing can be found by visiting the [NSW Fair Trading website](#).

Most of the time, work on energised (live) equipment is prohibited. Before making contact with or commencing work on equipment, ensure that it is switched off and test every circuit and conductor to ensure it has been properly isolated. Lock the circuit to prevent inadvertent re-energisation.

Work in under floor and roof space areas involves additional electrical risks, including:

- electrical wiring powering various circuits within the property itself such as lighting, power points, hot water systems, ovens, air conditioners etc.
- electrical wiring that may be installed within those spaces that is powering another part of the property such as an extension, garage, granny flat or duplex
- metallised foil ceiling insulation
- electrical wiring from solar/battery storage systems
- exposed electrical wiring

The information contained in this publication is based on knowledge and understanding at the time of writing and the findings are not yet confirmed. SafeWork NSW has commenced an investigation in response to the incident to determine its cause and circumstances. No conclusions should be drawn from the information in this publication about the cause of the incident or the culpability of any party.

25/05/2022

- electrical wiring (consumer mains) that connect from street supply to the electricity meter box
- damaged or aged wiring. Ensure any damaged or aged wiring and appliances found within ceiling and underfloor spaces/surrounds are isolated where possible and reported to the property owner.

Related information

- [Work Health and Safety Act 2011](#)
- [Work Health and Safety Regulation 2017](#)
- [Managing electrical risks in the workplace](#) - SafeWork NSW Code of Practice
- [Electrical work guidance material](#) – SafeWork NSW
- [Electrical Safety video](#) - SafeWork NSW
- [Electrical Hazards When Working in Ceiling Spaces](#) - SafeWork NSW safety alert
- [Electrical resources](#) – SafeWork NSW
- [Fair Trading NSW](#)
- Australian Standards:
 - AS/NZS 3000:2018 Electrical Installations (AUS/NZ Wiring Rules)
 - AS/NZS 3012:2019 Electrical Installations - Construction and demolition sites
 - AS/NZS 3760:2010 In-service safety inspection and testing of electrical equipment
 - AS/NZS 4836:2011 Safe working on or near low-voltage electrical installations and equipment