

How many hazards can you find?



# How many hazards can you find?

**1** Farmer standing on wobbly pipes. The long pipe he is holding is too close to power lines.



**2** Hazardous chemicals are not locked away.



**3** Sheep in overfilled pen with farmer working inside.



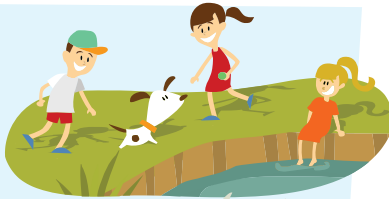
**4** Rubbish on ground.



**5** Incorrect use of quad bike: farmer carrying a child as a passenger and a big, heavy tank on the back. He is not wearing a helmet.



**6** Small children wandered off with no adult supervision, playing near the edge of the dam.



**7** Bull in open pen.



**8** Farmer is not bending or lifting properly and has his back turned to the angry bull.



**9** Tractor is turned on without a driver in the seat. Farmer not wearing his protective clothing when pouring the chemicals which are also spilling.



**10** Driver has only one hand on the wheel and he is not wearing hearing protection. Child sitting on the guard. Tractor has no Roll-over Protective Structure (ROPS). No guards on slasher and power take-off (PTO).



**11** Farmers smoking near petrol. Farmer sitting on the truck smoking while grain is being unloaded.



**12** Unguarded post hole digger/driver.



**13** Farmer in the silo. Unguarded drive pulleys on the auger. Farmer standing over the power take-off shaft. He is also not wearing the correct clothing for sun protection.



**14** Farmer standing on wobbly surface using a chainsaw. He is underneath the tree he is cutting. He is not wearing safety gear.



**15** Open hatch on silo. Child climbing ladder. Ladder is not secured and doesn't stop access to it.



## Talk about how to stay safe on the farm.



Visit [www.safework.nsw.gov.au](http://www.safework.nsw.gov.au) for more information or call Customer Experience on 13 10 50.